

ultrasuede® nu

# ultrasuede® nu

## Ultrasuede® nu 0.6

0.6mm-thick stretch type with a delicate texture, smooth touch and grain leather-like luster plus high functionality.

### NOTES FOR HANDLING

- When combining medium/dark-colored Ultrasuede®nu with lighter-colored materials, color migration may occur.
- Ultrasuede®nu fabric surface is specially finished with resin that produces delicate and random patterns on the surface. This unique pattern might not be noticed on a short piece of fabric, so please perform your quality check on a long fabric piece.
- Ultrasuede®nu may have slight differences in color, luster, and/or touch within a fabric roll or between fabric lots.

### CARE INSTRUCTIONS

- Dry cleanable by conventional method.
- Because Ultrasuede®nu is an extremely delicate material, handwash by gently pushing it down in a liquid at below 30°C. Avoid rubbing or twisting as it may deteriorate Ultrasuede®nu's surface texture.
- An Ultrasuede®nu product should not be washed together with other items, as color migration may occur depending on the material or color of other items.
- When using a detergent, liquid neutral detergent is recommended. Do not use chlorine bleach.
- When ironing, use a low temperature setting (110°C or lower) and place a seamless cloth on top of the product. Use light pressure and never press the iron too hard or stop at one place on the product.
- Ultrasuede®nu is a non-woven material made of ultra-fine fibers having a specially treated soft feel and a genuine grain leather appearance. As such, repeated rubbing may alter its lustrous appearance or cause excessive fuzzing or fabric tears.
- When storing, place the Ultrasuede®nu product in a bag. Avoid storing in places subject to high temperature or high humidity.

### Quality Specification (Physical Properties and Colorfastness)

CHARACTERISTICS	METHOD	Specification	
Tear Strength (N)	ISO 13937-1	≧7N	
Tensile Strength (N)	ISO 13934-1	≧200N	
Pilling Resistance (Grade)	ISO 12945-1 (10 hours)	≧Grade3	
Abrasion Resistance (Grade)	ISO 12947-2(12KPa) Change in Appearance(Internal Standard)	≧Grade3	
Dimensional Change after Washing (%)	ISO 6330 4M-C (Front Loading Washing Machine/3 times)	-3%to+1%	
Colorfastness to Rubbing (Grade)	ISO 105-X12	Dry	≧Grade4
		Wet	≧Grade3
Colorfastness to Light (Grade)	ISO 105-B02 (Xenon)		≧Grade3
Colorfastness to Perspiration (Grade)	ISO 105-E04	Color Change	≧Grade4
		Staining	≧Grade3
Colorfastness to Washing (Grade)	ISO 105-C06 B2S	Color Change	≧Grade4
		Staining	≧Grade3

### CARE LABEL



For inquiries, please visit: [ultrasuede.com/contact](http://ultrasuede.com/contact)

You may also contact our regional office directly:

#### NORTH AMERICA

Toray International America Inc.  
Ultrasuede Department  
461 Fifth Avenue, 9th FL.  
New York, NY 10017  
+1-212-697-8150  
+1-212-972-4279 (Fax)  
for product information and new accounts  
1-800-633-8870  
for existing customers within North America

#### CHINA

Toray International (China) Co.,Ltd.  
Shanghai  
+86-21-3251-8553 Ext. 4214

#### EUROPE

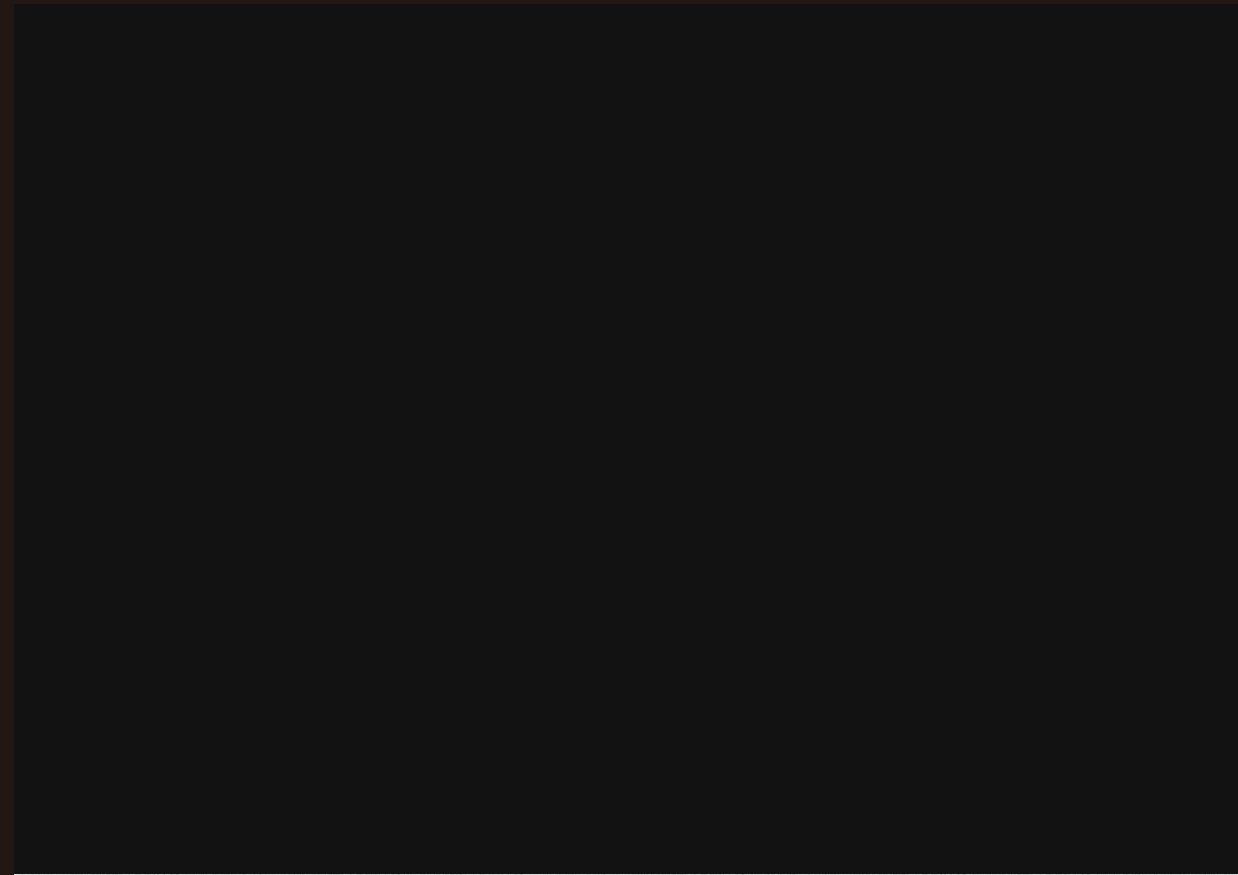
Toray International Europe GmbH  
Frankfurt am Main  
+49-6102-7999  
Ext. 121 & 128

#### JAPAN, KOREA, ASIA AND OTHER PARTS OF THE WORLD

Toray Industries, Inc.  
Osaka  
+81-6-7688-3373

Tokyo  
+81-3-3245-5401

Style : AUSNF2

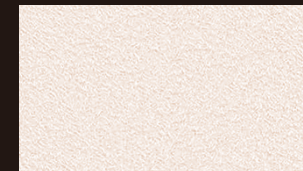


Ultrasuede®nu is a non-woven material created using ultra-fine fibers having a genuine grain leather appearance. It features a luxurious texture with advanced functionality and offers creative design possibilities. In 1970, Toray developed an innovative product: the world's first non-woven material created using ultra-fine fibers in our "Island in the Sea" configuration. Based on all the technological expertise the company has accumulated since then, the debut of Ultrasuede®nu marks a superlative new option for optimum quality material from Japan.

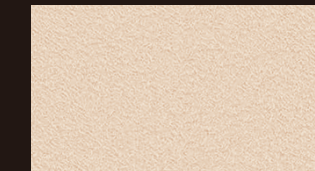
- Refined, delicate texture combines grain-side leather's lustrous shine with smooth hand
- A wide range of exquisite colors
- Solid colorfastness
- Breathability for true comfort
- Easy maintenance
- It's both uniform and lightweight, easily processed for a multitude of products and uses
- Unlimited creative options such as laser cutting, embossing and printing
- Vegan (non-animal) material

#### SPECIFICATIONS

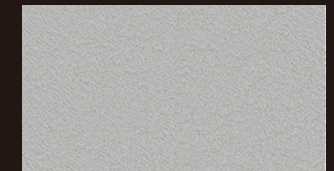
Style	AUSNF2
Composition	80% Polyester20% polyurethane
Width	51"/1.300mm
Put-up	33 yard/30m R.O.T
Thickness	0.6mm
Weight	230g/m <sup>2</sup> ±20g
Fiber Fineness	0.04 denier



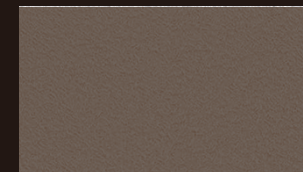
CN1 Off White



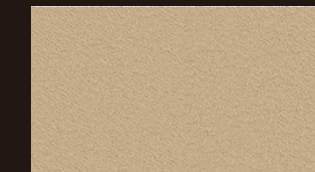
CA5 Ivory



GV0 Melange Gray



CB9 Sable



CB1 Sand



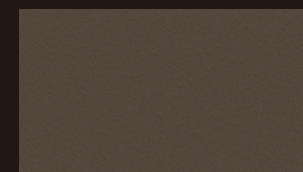
GD8 Brownstone



DE0 Almond



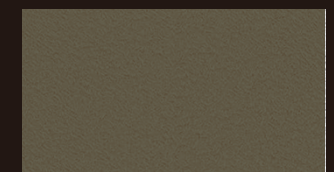
FJ0 Ginger



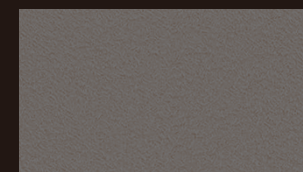
GA3 Coffee



GH0 Black Olive



GV9 Forest Green



DC2 Carbon Gray



DE1 Garnet



GB2 Black



GB7 Navy



FC6 Blue

Ultrasuede® keeps evolving toward a future full of "Beautiful Possibilities".